

Pressure Reducing Valves Watts PR500



The pilot operated reducing valve PR500 reduces a higher upstream pressure to a constant lower downstream pressure. This very accurate valve is designed to operate with a minimum of maintenance. The only moving parts in the valve are the

diaphragm and the stem assembly, which are guided by an exchangeable bearing in the cover and the valve seat.

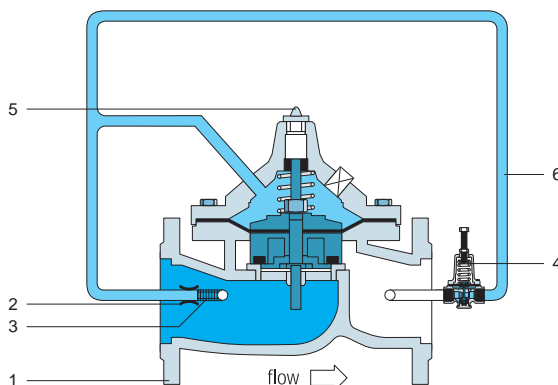
The Watts PR500 is easy to install and adjust. It is available with flanges (DN50 - DN300).



A Division of Watts Water Technologies Inc.

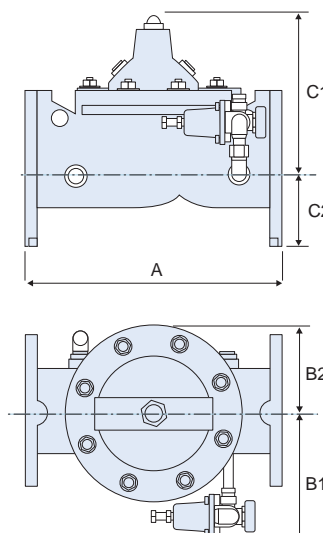


The pilot operated reducing valve PR500 reduces a higher upstream pressure to a constant lower downstream pressure. This very accurate valve is designed to operate with a minimum of maintenance. The only moving parts in the valve are the diaphragm and the stem assembly, which are guided by an exchangeable bearing in the cover and the valve seat. The Watts PR500 is easy to install and adjust. It is available with flanges (DN50 - DN300).

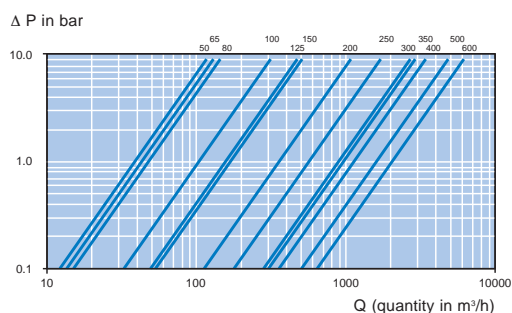


No.	Name
1	Body/Main valve
2	Fixed orifice
3	Flow strainer
4	Pilot valve
5	Air vent
6	Flexible tubing

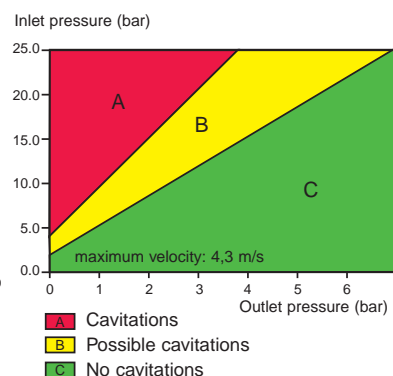
Dimensions



Pressure Loss Curve



Cavitation Curve



Article	DN	PN	A	B1	B2	C1	C2	Kg
500050548	50	10/16	230	160	85	165	85	20
503050546	50	25	230	160	85	165	85	20
500065548	65/60	10/16	290	170	85	165	95	25
503065546	65/60	25	290	170	85	165	95	25
500080548	80	10/16	310	175	85	165	100	30
503080546	80	25	310	175	85	165	100	30
500100548	100	10/16	350	190	120	210	110	40
503100546	100	25	350	190	120	210	120	40
500125548	125	10/16	400	200	150	285	125	70
503125546	125	25	400	200	150	285	135	70

Article	DN	PN	A	B1	B2	C1	C2	Kg
500150548	150	10/16	480	210	150	285	145	90
503150546	150	25	480	210	150	285	150	90
500200548	200	10	600	235	200	360	170	150
505200548	200	16	600	235	200	360	170	150
503200546	200	25	600	235	200	360	180	150
500250548	250	10	730	280	255	475	200	400
505250548	250	16	730	280	255	475	200	400
503250546	250	25	730	280	255	475	215	410
500300548	300	10	850	305	300	570	230	550
505300548	300	16	850	305	300	570	230	550
503300546	300	25	850	305	300	570	245	570

PN 10/16 = Max. working temperature: 70 °C (continuous)

PN 25 = Max. working temperature: 20 °C (continuous)

The photographs and descriptions in this brochure are purely informational and in no way binding, Watts Industries reserves the right to make any technical or exterior changes deemed necessary to their products without prior notification.