

SAFETY GROUP GSE3000 EN1488 - 1/2" 15mm



- Safety Group GSE3000
Application & Installation

PURPOSE

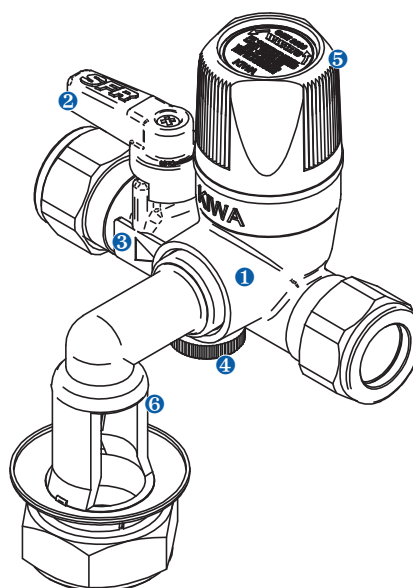
This safety group is specifically designed to protect water boiler tank (electric, gas ...) with a power up to 10KW.

This device allows 4 main functions :

- protect the boiler against excess pressure, this function is assumed by the safety valve set at 8 bar (800kPa)
- isolate the tank from the main water supply, this function is assumed by the ball-valve
- to forbid the backflow of the hot water inside the cold main water supply, this protection is assumed by the integrated check-valve (KIWA and BELGAQUA approved)
- flush the boiler : in case of need the safety valves authorize the total blowing off of the boiler

DESIGN

- ❶ corrosion resistant DZR brass body
- ❷ quarter-turn isolating ball-valve
- ❸ check-valve KIWA and BELGAQUA approved
- ❹ check-valve inspection port
- ❺ expansion relief-valve set at 8 bar, instant opening with "POP" effect guarantees very high flow rate
- ❻ new air-gap according EN1488 with 22 mm

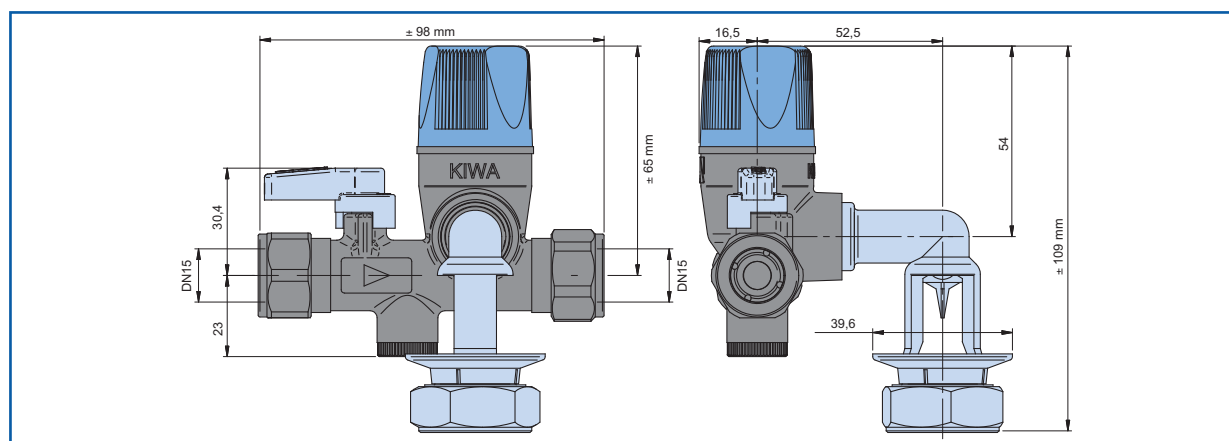


FEATURES

- high flow rate (up to 30 l/min at 1 bar)
- extra compact dimensions
- can be installed in any position
- new air gap according EN1488 (22 mm)
- valve knob designed for excellent grip
- ball-valve with "soft" stainless-steel seat to avoid scale deposit
- DZR brass body corrosion resistant
- KIWA approved
- BELGAQUA approved
- manufacture by the first European producer of safety group (more than 2 millions safety group installed)
- ISO 9001 (2000 version)

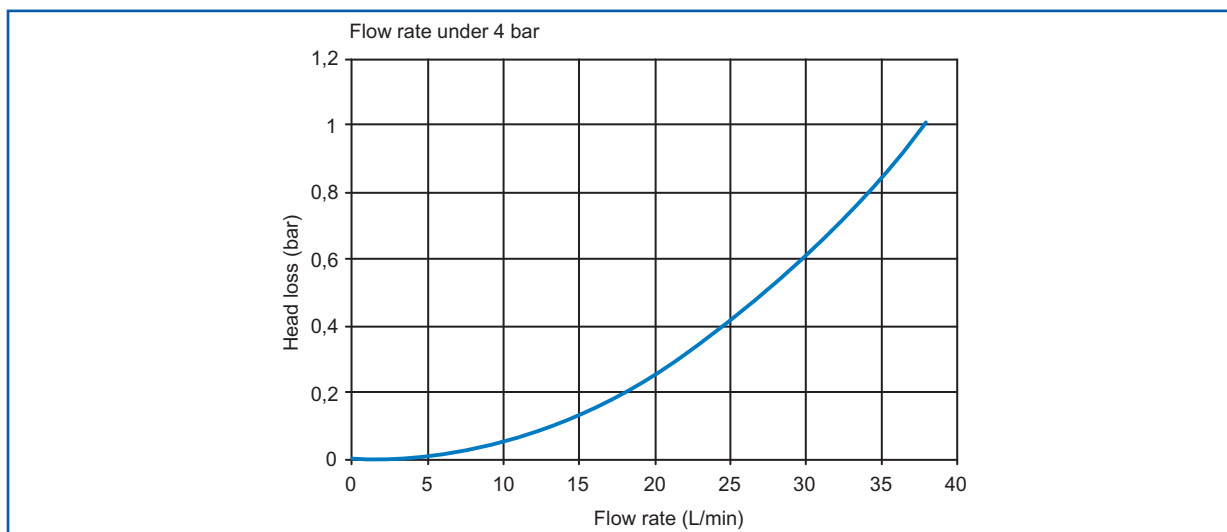


Dimensions

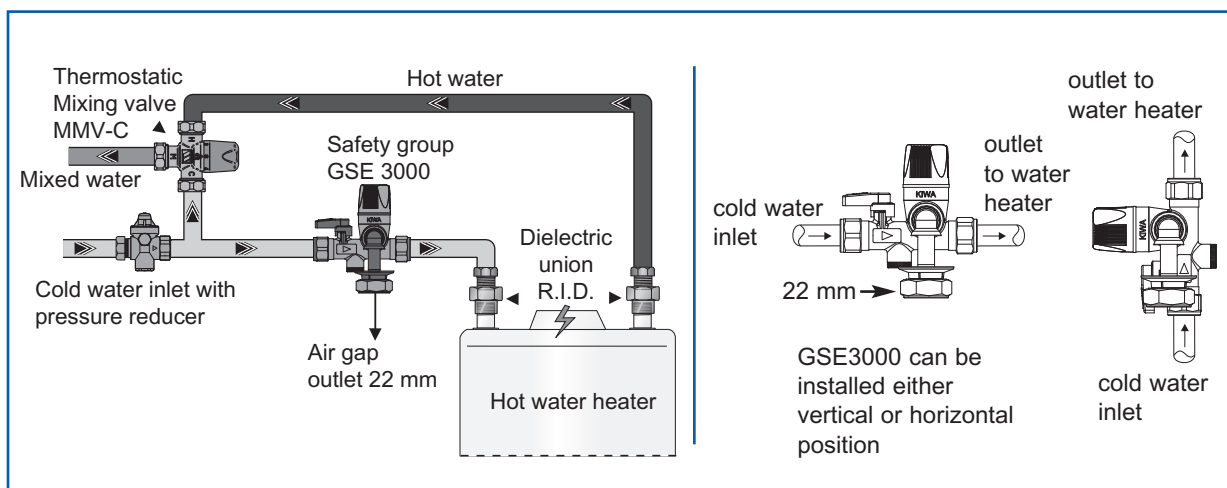


Parts list	
Body	DZR Brass
Machined forged body	Corrosion resistant DZR brass CW602N
Valve diaphragm	EPDM 70 SH
Valve seat	Corrosion resistant DZR brass CW602N
Ball valve knob	PA6.6 + 30%GF
Air gap	POM
Ball valve	CW617N
Ball valve seal	NBR 70SH
Check-valves	POM
Plastic plug	PA

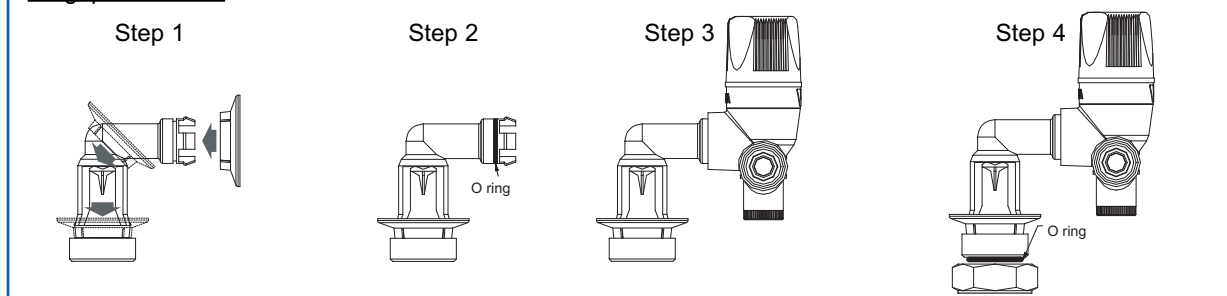
Pressure drop curve / headloss :



Typical installation :



Air gap installation



Product range Watts Industries

- System disconnectors
- Backflow protection devices
- Check valves
- Safety units
- Safety relief valves
- Pressure reducing valves
- Automatic control valves
- Butterfly valves
- Shut off valves
- Measuring gauges
- Temperature control
- Expansion vessels
- Process switches
- Fuel products
- Gas products
- Electronic controls
- Installation protection products
- Radiator valves
- System products
- Manifolds and fittings



WATTS INDUSTRIES France

06, avenue Gustave Eiffel - B.P. 40339 - 28006 CHARTRES Cedex (France)

Phone +33 (0)2 37 25 11 00 - Fax +33 (0)2 37 25 11 11

E-mail info@wattsindustries.fr - Site www.wattsindustries.com