

# THERMOSTATIC MIXING VALVE TL117



## ◆PURPOSE

Thermostatic mixing valve designed to supply sinks and wash-basins with tempered water not exceeding a set temperature (up to 5 basins depending on flow rate of tap connections).

Ideal for multi-facility applications : schools, restaurants, laboratories, companies... anywhere needing a supply of water at a temperature pre-set on site.

## ◆DESCRIPTION

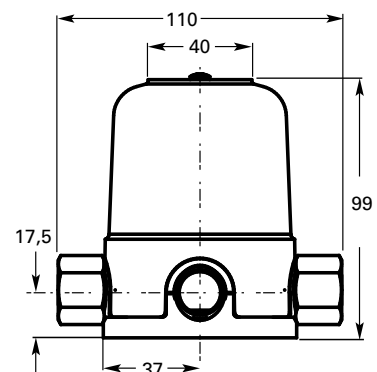
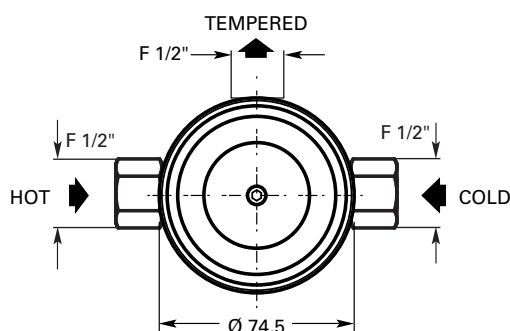
- Weight 0,95 kg. Easy-to-replace modular adjustment mechanism.
- Brass body. Polypropylene protective cover secured by a hexagonal socket screw, making the adjustment section tamper-resistant.
- No setting scale: temperature pre-set by installer or operator.
- Fitted with 2 approved check valves (KIWA, DVGW, NF, BELGAQUA, WRC).
- Hot and cold water inlets : F 1/2".
- 1 top-mounted tempered water outlet : F 1/2".
- Baseplate drilled for wall mounting.
- Temperature cannot be adjusted by user.
- BSP threaded : code TL117 (compliance with standard E1111 & EN1287).
- NPT threaded : code TL117NPT (ASSE 1016 listed).

## ◆SCALD PROTECTION

Hot water supply cut totally and immediately if cold water supply is interrupted.

## ◆PROTECTION AGAINST LEGIONELLA

- Cartridge can be removed and replaced (for easier scale removal and disinfecting).
- Integral approved check-valves (withstanding temperatures above 90°C).
- Hot water flush : simply remove the protective cover and turn the cartridge to maximum hot position to allow hot water to circulate (kills bacteria above 60°C).



## ◆FEATURES

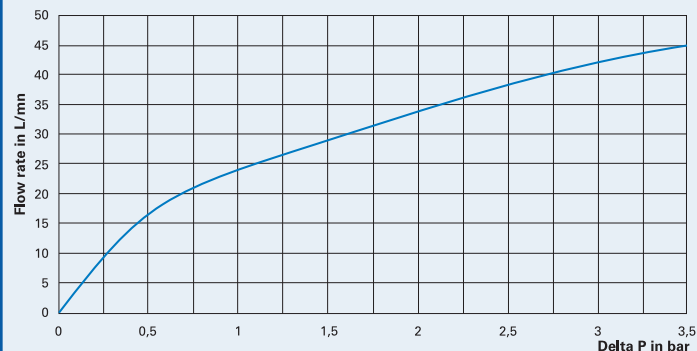
Easily installed thermostatic mixing valve with cover preventing the end user from adjusting the temperature. Brass body and replaceable adjustment mechanism with approved check valves and filters. Polypropylene protective cover secured by a hexagonal socket screw prevents tampering with the chosen temperature setting. Outstanding reliability. 2-year warranty. Compliance with standard EN1111. TL117 NPT threaded ASSE 1016 listed.

## ◆SPECIFICATIONS

- Female thread on inlets and outlets.
- Number of outlets: 1 top-mounted outlet with 1/2" female connection.
- Temperature : accurate to within one degree of chosen temperature.
- Head loss under dynamic pressure at the mixer inlets is shown by the curve above right.
- Stainless steel filters : 1.4310
- Maximum pressure : 10 bar
- Maximum temperature : 85°C
- Setting range from 15 to 50°C
- Maximum flow rate : 42 l/min at 3 bar

## ◆INSTALLATION

- Position and secure the device; it will operate in any position.
- The stop valves, at least for the inlets, must be installed close to the mixing valve to allow it to be isolated for maintenance or cartridge removal without draining the facility.
- The valves on the inlets must be left fully open during normal service.
- The temperature set must be adjusted on site as required.



### DYNAMIC SUPPLY PRESSURE FLOW RATES AT INLETS

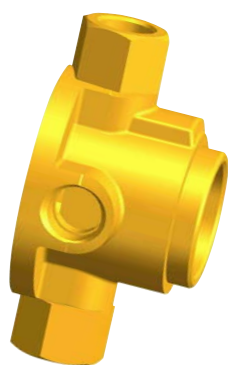
Under	1 bar	2 bar	3 bar
Flow rate in l/mn.	24	34	42
Flow rate in l/sec.	0,4	0,56	0,7

### Maximum recommended flow rates

(corresponding to flow velocity of 2 m/s)

- with 12x14 pipes :	21 l/mn
- with 14x16 pipes :	24 l/mn
- with 16x18 pipes :	33 l/mn
Minimum permissible flow rate	5 l/mn
Maximum permissible flow rate	42 l/mn

The mixing valves can accept temporary nominally unbalanced pressures up to 1,5 bar.



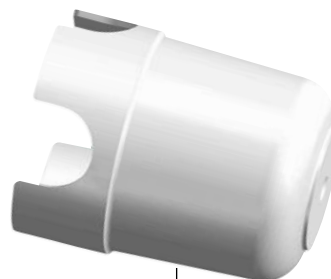
1



2



3



4



5



6

- 1 - Brass body with approved integral check-valves
- 2 - Cartridge with filters
- 3 - Nut
- 4 - Polypropylene cover
- 5 - Stainless steel screw
- 6 - 2.5 mm Allen key

Ref. 102710  
Ref. TCP7  
Ref. 102312  
Ref. 108784  
Ref. 108782  
Ref. 102046

### Siège social et usine

13, rue J.J. Rousseau.  
B.P. 90007 Tél. 03 22 60 39 80  
80390 FRESSENNEVILLE Fax 03 22 60 39 89

### Services commerciaux

06, avenue Gustave Eiffel  
B.P. 40339  
28006 CHARTRES Cedex

Tél. 02 37 25 11 00  
Fax 02 37 25 11 11  
Fax 02 37 25 11 44



A Division of Watts Water Technologies Inc.

