

Renewable energies



Control units and accessories for solar thermal systems



Charging control units for return flow temperature increase in solid fuel boilers



Brine pump groups, brine manifolds and heating circuit control units for heat pumps

Ready-made OEM systems for manufacturers of

- ▶ Solar thermal systems
- ▶ Solid fuel boilers (pellets, split logs, wood chips...)
- ▶ Heat pumps

Fresh thinking for renewable energy

For more than 20 years, Watts Industries Deutschland GmbH has been developing and manufacturing OEM products for boiler adaption, heating control systems, and manifold technology for radiant panel heating/cooling for the HVAC industry. Our customers – including most market leaders for boiler and underfloor heating technology – rely on competent and individual solutions for conventional heating technology. The dramatic increase of energy prices and current efforts towards climate protection demand for new solutions. Watts answers these challenges with the development of new, innovative products. Suppliers of solar thermal systems, solid fuel boilers and heat pumps – such as your company – can revert to our many years of experience.



EFFICIENCY THROUGH FULL SERVICE

We deliver complete packaged solutions with individual yet perfectly matched components. Every single component – from manifolds via fittings, electronic and hydraulic control components to accessories – is developed and manufactured within the Watts Group.

This single-source approach has many advantages for our customers: They need to issue only one purchase order, receive one delivery, have one purchasing contact, need to connect to one system only, benefit from a mature quality concept, and have access to a competent technical service team.

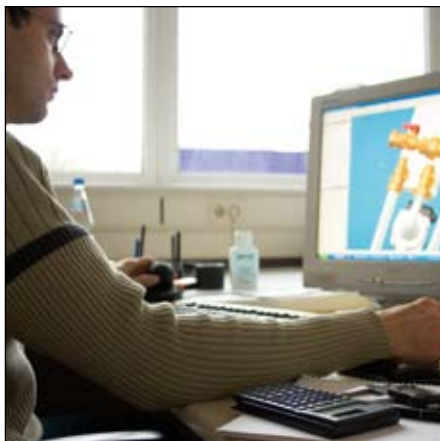
SAFETY THROUGH SIZE

You have access to the full potential of Watts Industries Europe with its 23 companies and a staff of more than 1.500 that develop and manufacture products for the European market. On a worldwide level, the Watts Group maintains more than 45 companies and counts over 5.100 employees, representing a vast innovative, technological, and economic potential for the protection of your investment.

TRUST THROUGH RESPONSIBILITY

One source – one responsibility. For our customers, this means transparency and clarity. Our customers can fully rely on our profound knowledge and understanding of the products we sell, and we share it with them, regardless of their location: Technical service and support for Watts Industries products are available around the globe.





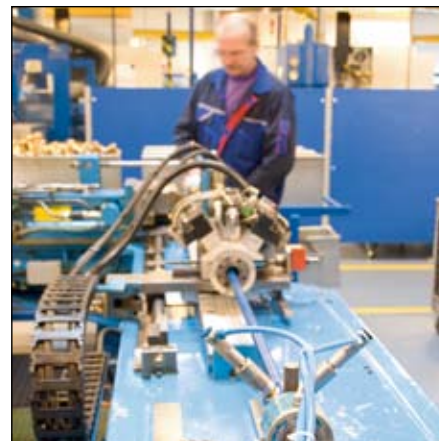
SUCCESS THROUGH SPECIAL SOLUTIONS

We specialize in making individual solutions come true. As an OEM industrial customer, you can either revert to ready-made products developed by our experienced team or use your own potential and contribute in the conceptualization and planning process. In this way, you will receive individual products that are tailored to your needs. Three development and design departments with more than 30 experts at the Landau site alone as well as several test stations help shorten development times to a minimum.



MATERIAL FLEXIBILITY

Stainless steel, steel or brass? Brass circular tubes or hot-pressed brass? Whatever material you want to use – we will work it out for you. Watts Industries products seamlessly integrate with your product philosophy.



SAFETY THROUGH QUALITY

The European Watts Group manufactures according to a common quality standard. It goes without saying that all our products comply with severe European safety regulations and fulfil the criteria for market approval of many individual countries.

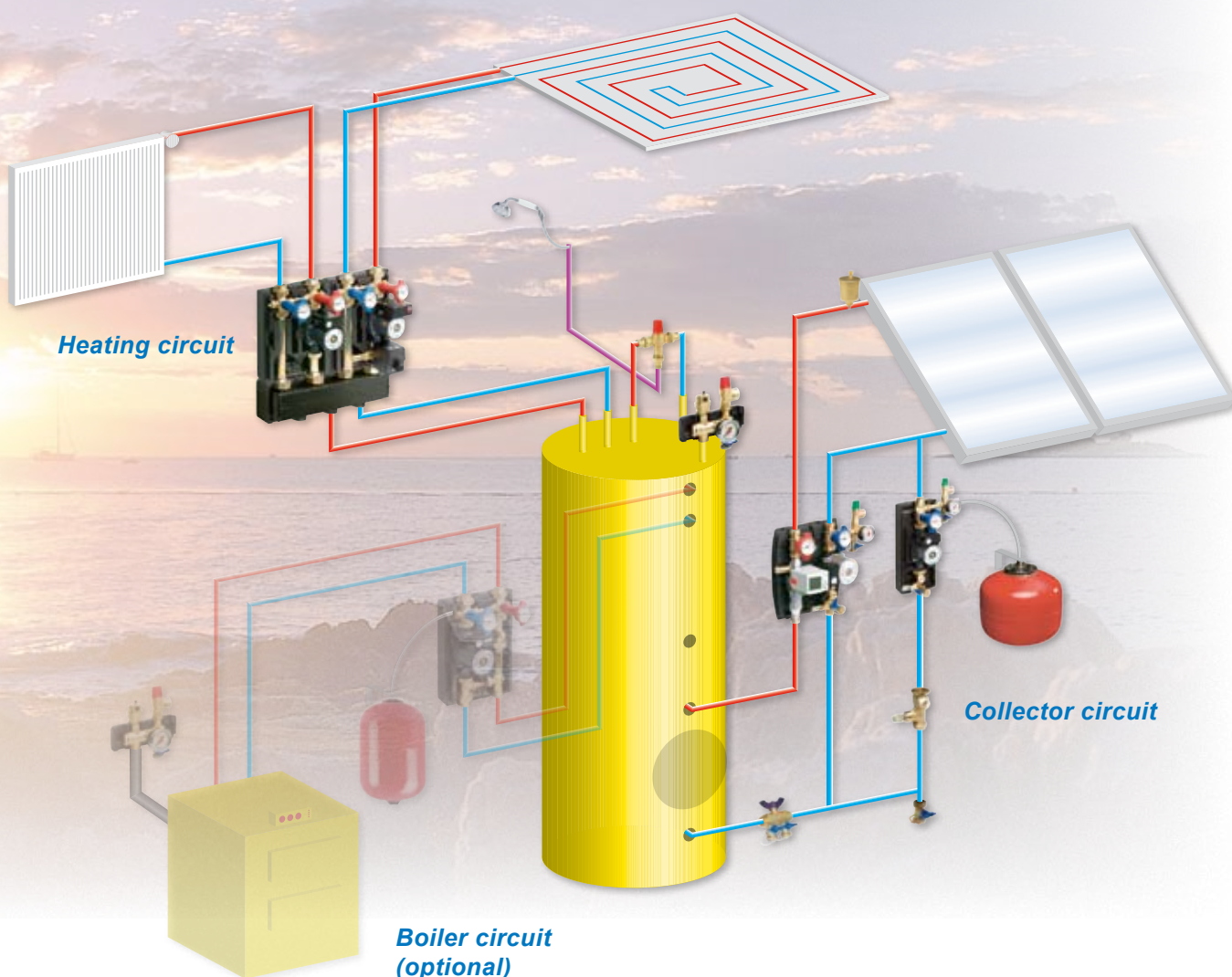
Watts' commitment to quality goes far beyond product quality – it comprises all areas of corporate operation, from development, manufacturing and sales to logistics and customer service. This commitment is documented by the certification of each Watts company to the international DIN ISO 9001/9002 standard.



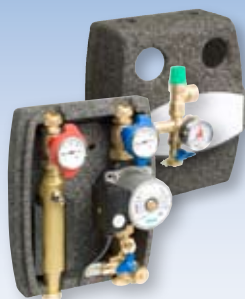
CONTENT	PAGE
SOLAR THERMAL	4-5
SOLID FUELS	6-7
GEOTHERMAL ENERGY	8-9
MANIFOLD TECHNOLOGY	10-11

A sunny spot – assemblies for solar thermal systems

4



Standard components:



**FlowBox
SOLAR 8000**

► *Catalog p. 62*



**FlowBox
SOLAR-SINGLE
7000**

► *Catalog p. 62*



**FlowBox
SOLAR-CONTROL
8000**

► *Catalog p. 63*



**SOLAR expansion
vessel with or
without wall holder
with quick coupling**

► *Catalog p. 68*



**WattFlow SOL
balancing valve**

► *Catalog p. 66*



SOLAR safety unit

► *Catalog p. 68*



**QuickFill rinse, filling
and drain fittings**

► *Catalog p. 65*



**SOLAR
ball valve
shut-off valve
quick coupling**

► *Catalog p. 67*



**SOLAR automatic
air vent**

**SOLAR
safety valve**

► *Catalog p. 66*



**Cap valve in
accordance with
DIN EN 12828
(DIN 4751)**

► *Catalog p. 67*



**Solar heating system
separation**

► *Catalog p. 64*



**Thermostatic
mixing valve**

► *Catalog p. 72*



**Venting pipe for
FlowBox solar
control units**

► *Catalog p. 65*



**Electronic control
components**

► *Catalog p. 96*

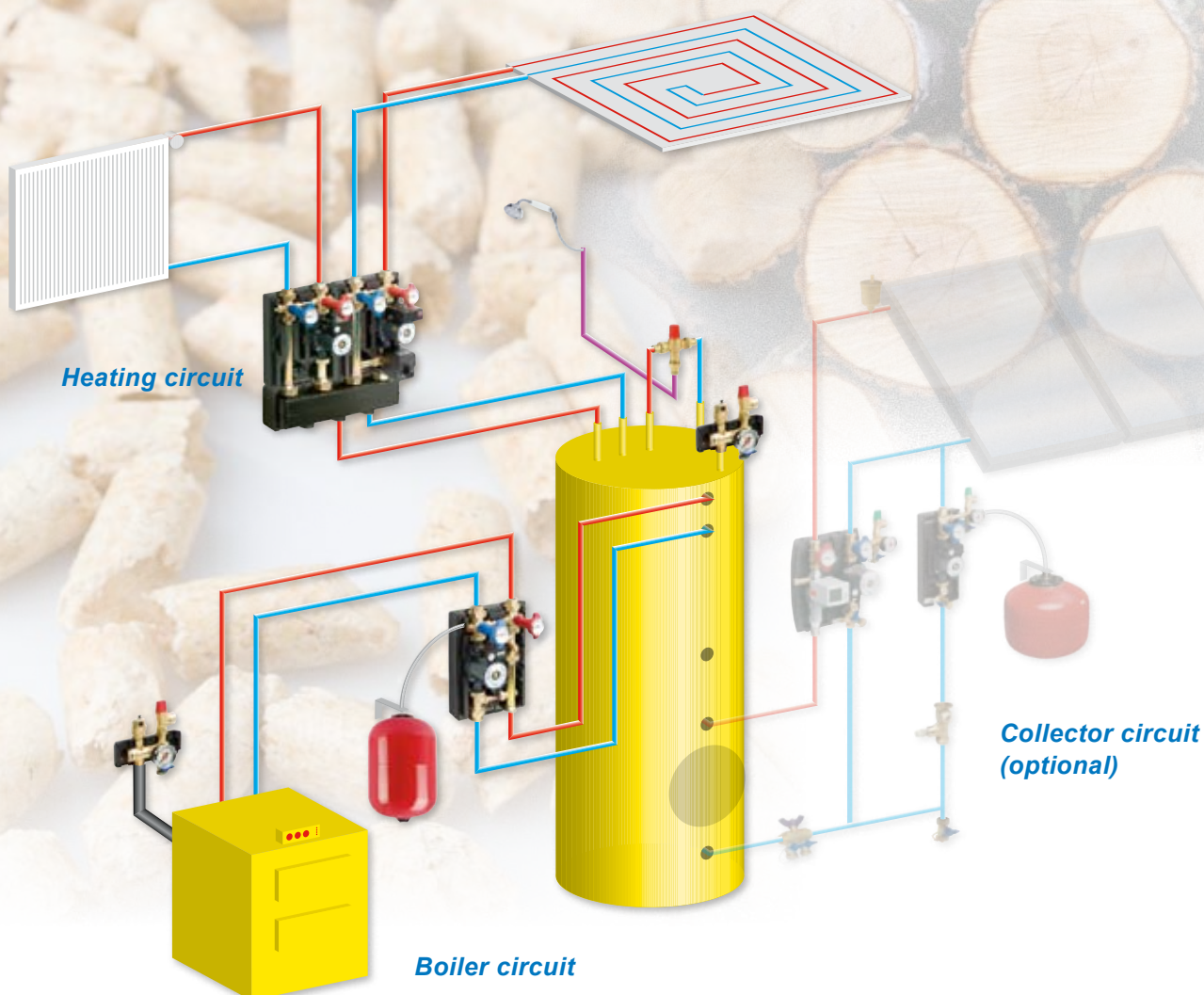


**Solar connection
tubing**

► *Catalog p. 66*

**All assemblies and standard
components are also available
as customer-specific OEM
versions!**

Red and hot – assemblies for solid fuel boilers

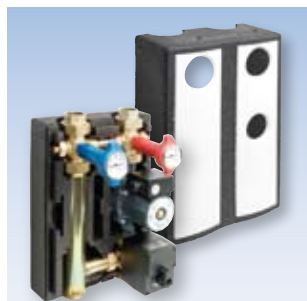


Standard components:



Boiler charging control FlowBox KLS

► *Catalog p. 12*



FlowBox HKM with mixing valve and overflow valve

► *Catalog p. 12*



FlowBox HK with overflow valve

► *Catalog p. 10*



Heating circuit distribution manifolds

► *Catalog p. 12*



System separation unit

► *Catalog p. 13*



Membrane-type expansion vessel

► *Catalog p. 23*



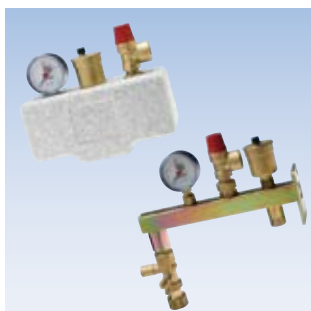
Connection tubing

► *Specification on request.*



Cap valve in accordance with DIN EN 12828 (DIN 4751)

► *Catalog p. 23*



Boiler safety group with insulation

► *Catalog p. 18*

Vessel connection groups with or without cap valve

► *Catalog p. 24*



Automatic quick coupling 3/4"

► *Catalog p. 23*



Automatic air vent MINIVENT

► *Catalog p. 19*

Component tested membrane safety valve

► *Catalog p. 17*



Balancing valve WattFlow BP

► *Catalog p. 26*



Thermal discharge safety device

► *Catalog p. 21*



Electronic control components

► *Catalog p. 96*

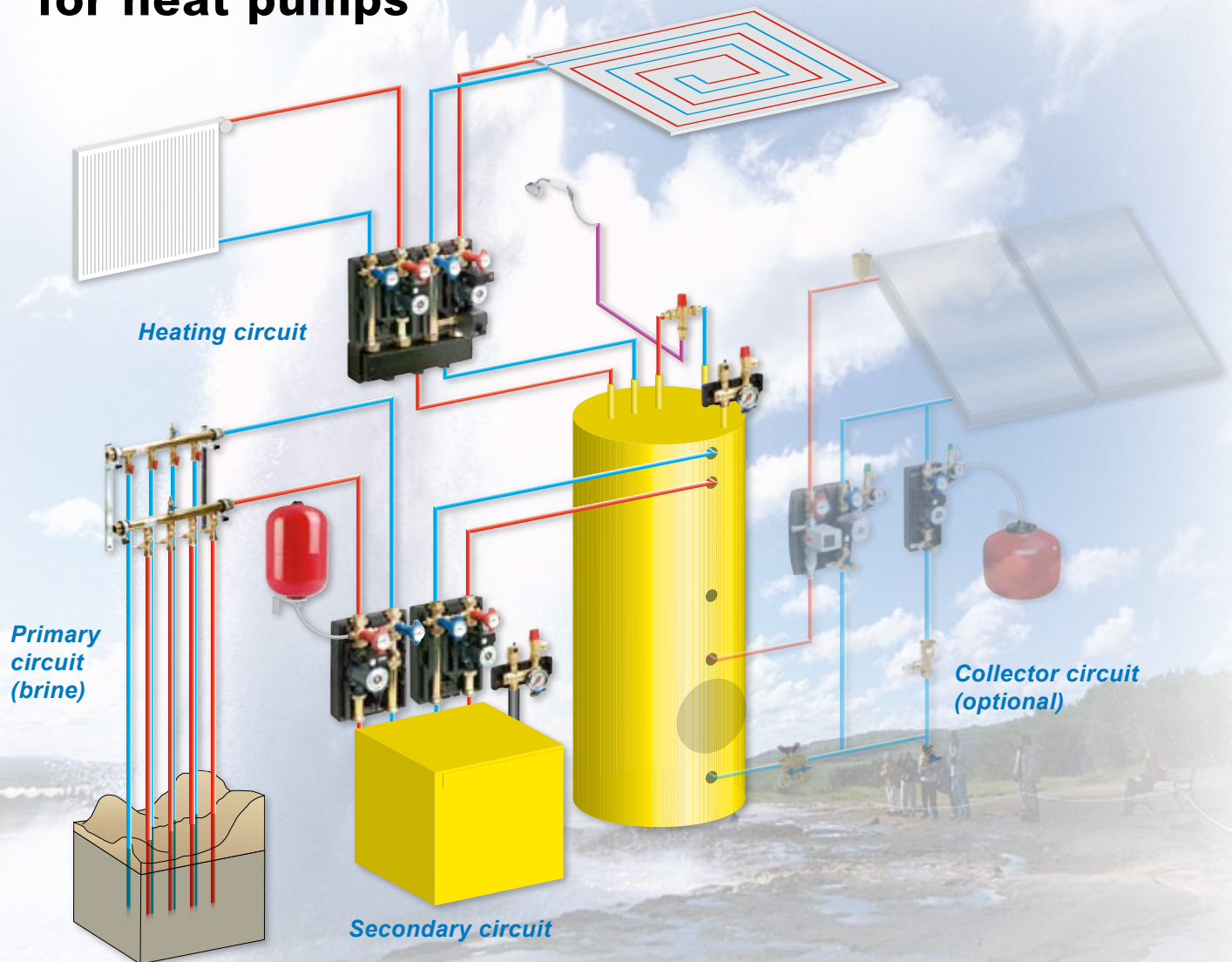


Draught regulator

► *Catalog p. 21/22*

All assemblies and standard components are also available as customer-specific OEM versions.

Warmth from the earth – assemblies for heat pumps



Standard components:



Brine pump groups

► Specifications on request



Brine manifold

► Specifications on request



Brine manifold

► Specifications on request



Brine manifold

► Specifications on request



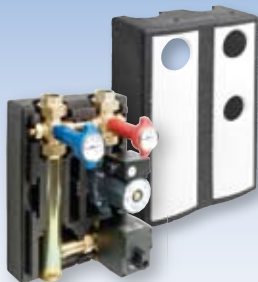
FlowBox HK with overflow valve

► *Catalog p. 10*



Wall bracket with quick coupling for expansion vessel

► *Catalog p. 68*



FlowBox HKM with mixing and overflow valve

► *Catalog p. 12*



Balancing valve WattFlow BP

► *Catalog p. 26*



Heating circuit distribution manifold

► *Catalog p. 12*



Thermostatic mixing valve

► *Catalog p. 72*



Boiler safety unit

► *Catalog p. 13*



Electronic control components

► *Catalog p. 96*



Connection tubing

► *Specifications on request*



SOLAR expansion vessel

► *Catalog p. 68*

All assemblies and standard components are also available as customer-specific OEM versions.

Your way to a complete system

Heat generators such as solar thermal systems and heat pumps work with low supply temperatures and can also be used for cooling in the summer. For an efficient heat or cold distribution in buildings, large radiating surfaces as in underfloor heatings are suited best. For this purpose, Watts Industries offers comprehensive solutions for manifold and control technology that perfectly match and adjust to your system. As an OEM customer, you will benefit from our experience of more than 20 years.

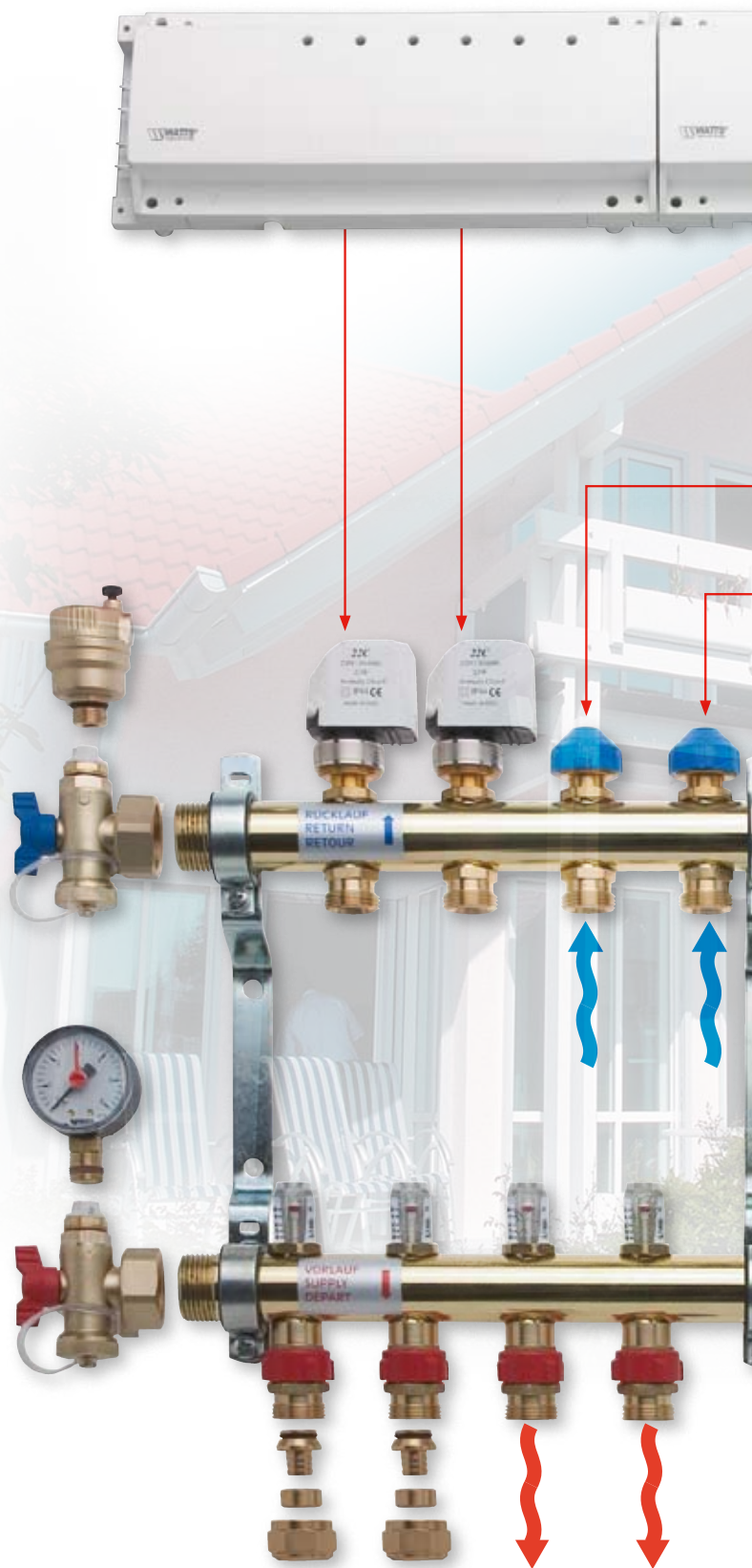
ELECTRONIC CONTROL COMPONENTS

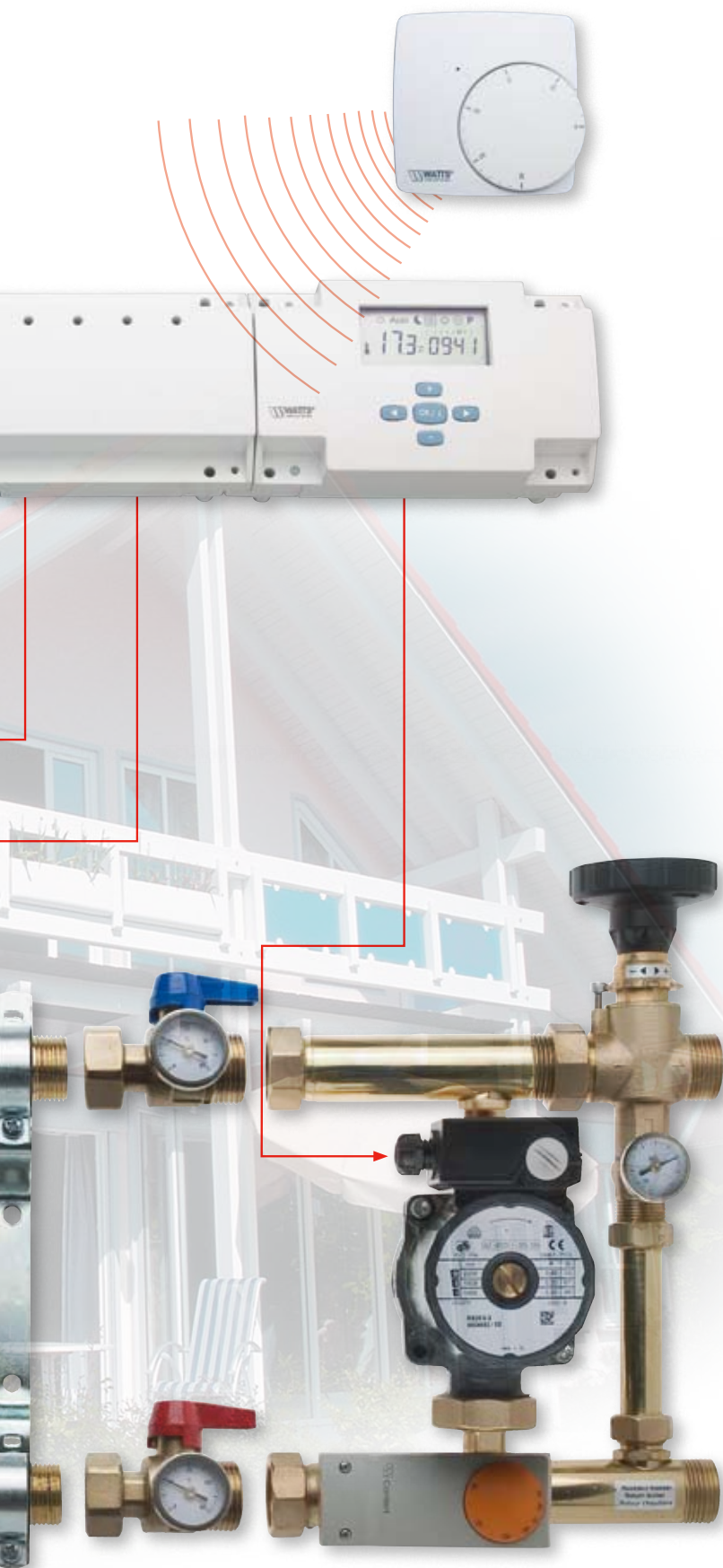
for secure and convenient control through mechanical and electronic room thermostats (also available as radio-controlled remote thermostats). All modules of the electric control manifold can be expanded and combined at any time. The actuators perfectly match the function and closing point of the manifold.



MANIFOLDS

made of brass (circular tube or hot-pressed), stainless steel, and steel and in a wide range of variants for many purposes. Connection is quick, safe and simple thanks to flat-sealing screw connections in the entire system. Special solutions can be developed for any purpose.





HYDRAULIC CONTROL UNITS

for centralized temperature control of heating circuits in direct vicinity of the heat generator as well as for decentralized control directly on the manifold. A vast number of different variants and types can be controlled according to the outside or supply temperature.



ACCESSORIES

e.g. manifold expansions, heat-meter installation sets, balancing valves, and fittings in different designs. Simple connection thanks to flat-sealing screw connections – just like in the entire system.



Product Range Watts Industries

System Disconnectors
Backflow Protection Devices
Check Valves
Safety Units
Safety Relief Valves
Pressure Reducing Valves
Automatic Control Valves
Butterfly Valves
Shut-Off Valves
Measuring Gauges

Temperature Control
Expansion Vessels
Process Switches
Fuel Products
Gas Products
Electronic Controls
Installation Protection Products
Radiator Valves
Manifolds & Fittings
System Products



Watts Industries Deutschland GmbH · Divison OEM

Godramsteiner Hauptstraße 167 · 76829 Landau · Germany

Phone +49 63 41 96 56-0 · Fax +49 63 41 96 56-340

E-mail info@wattsindustries.de · Internet www.wattsindustries.com